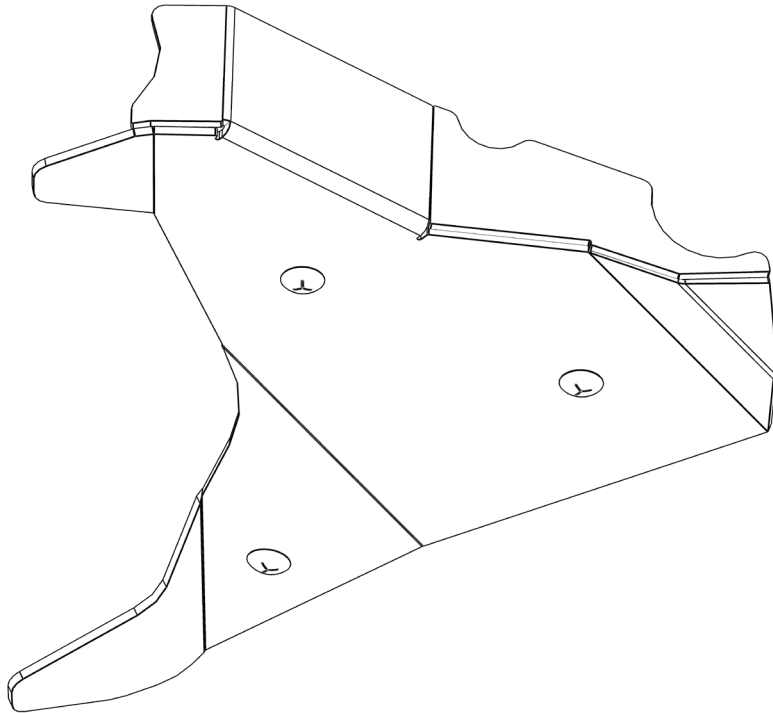




VICTORY4X4

22+ TOYOTA TUNDRA LOWER CONTROL ARM SKIDS

INSTALL INSTRUCTIONS



Please read the mounting instructions below carefully before attempting to install.

Be sure to check out the install video on the product page, if available.

Thank you for purchasing from Victory 4x4! Checkout our website, victory4x4.com for other great off-road products. Be sure to rate and review our product online. If you have any questions or are missing parts, please don't hesitate to call us at 269-459-8447!

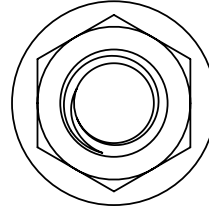
INCLUDED HARDWARE

2x



3/8"-16 X 4-1/2"
Carriage Bolt

6x



3/8"-16
Locknut

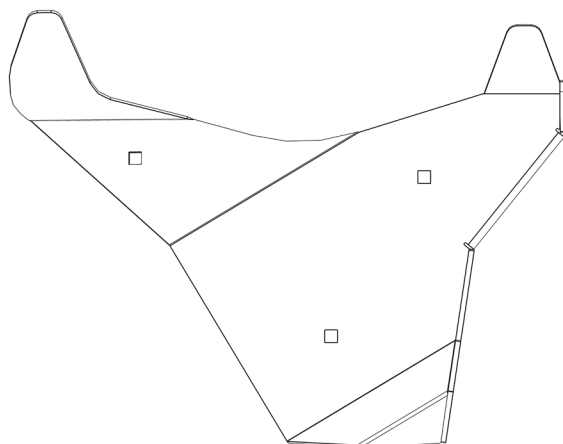
4x



3/8"-16 X 4"
Carriage Bolt

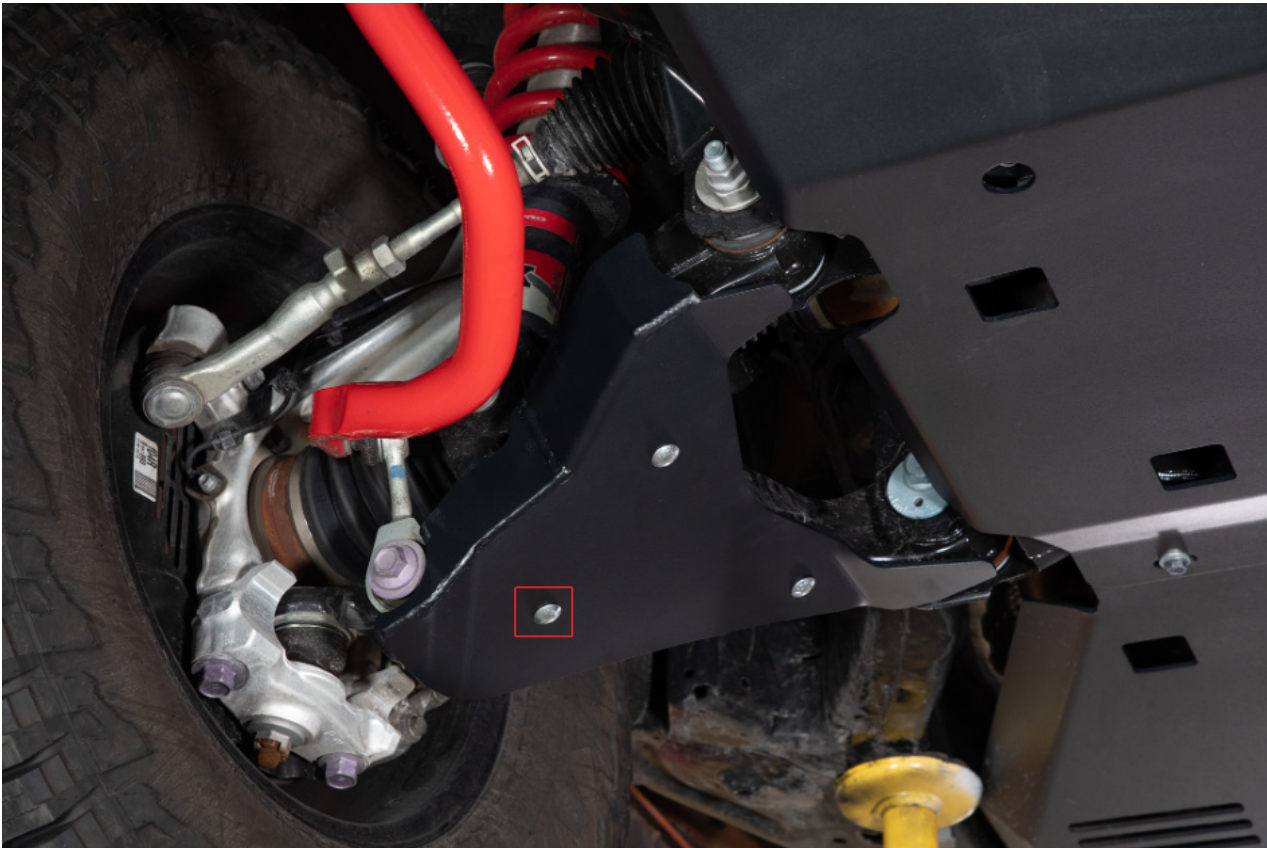
INCLUDED PARTS

1L/1R



ASSEMBLY

1. Start by taking the skid plate for the correct side of the vehicle (passenger side shown below) and line it up visually using the cut out on the side flange. Once lined up, take (1) of the longer provided carriage bolts and place the bolt up through the bottom most hole, closest to the wheel. And reach with a nut over the top and hand tighten it for now to hold the skid in place.



ASSEMBLY

2. Next, with the skid in place take (2) of the shorter carriage bolts, and put them up through the remaining holes on the skid plate and reach up over the top and thread the provided nuts onto the bolts. A diagram is shown below for the orientation in which to assemble the hardware into the skid plate (driver side).

