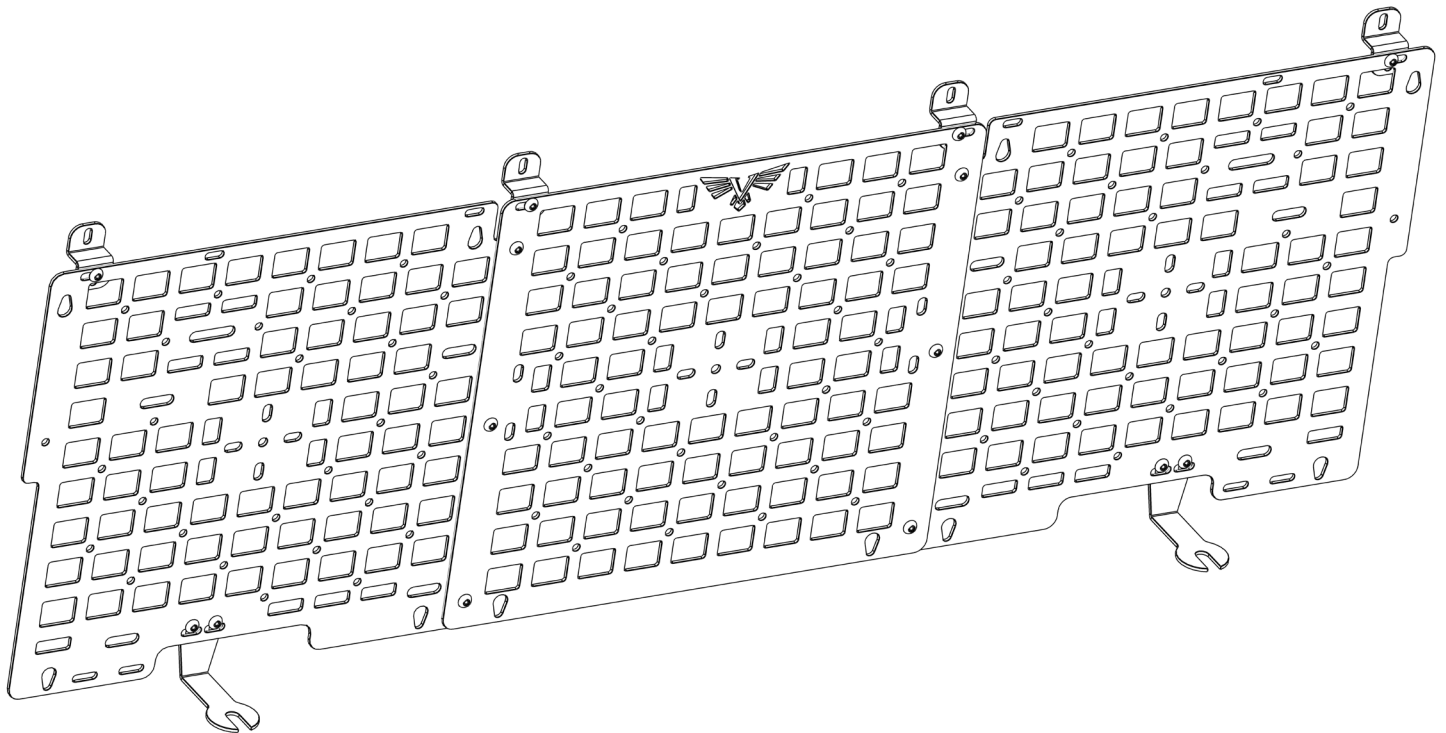




VICTORY 4X4

2ND AND 3RD GEN TUNDRA BEDFRONT MOLLE PANEL

INSTALL INSTRUCTIONS



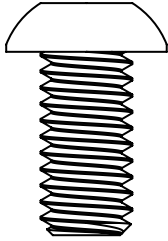
Please read the mounting instructions below carefully before attempting to install.

Be sure to check out the install video on the product page, if available.

Thank you for purchasing from Victory 4x4! Checkout our website, victory4x4.com for other great off-road products. Be sure to rate and review our product online. If you have any questions or are missing parts, please don't hesitate to call us at 269-459-8447!

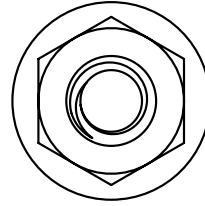
INCLUDED HARDWARE

14x



5/16"-18 X 5/8"
Button Head

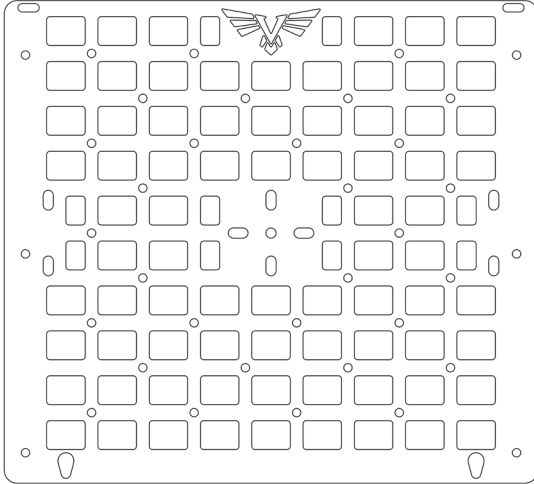
14x



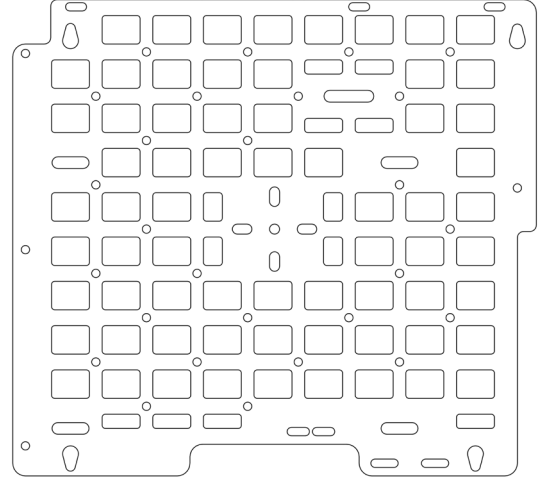
5/16"-18
Serr. Flange Nut

INCLUDED PARTS

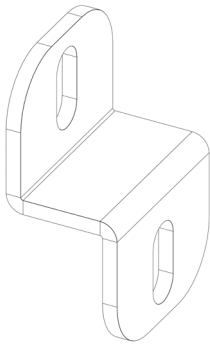
1x



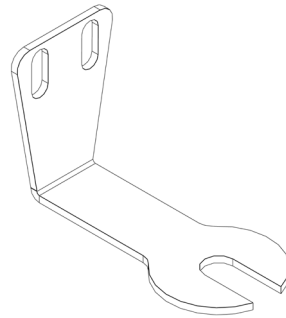
2x



4x

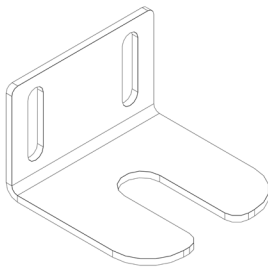


2x



2022 or Newer
Brackets

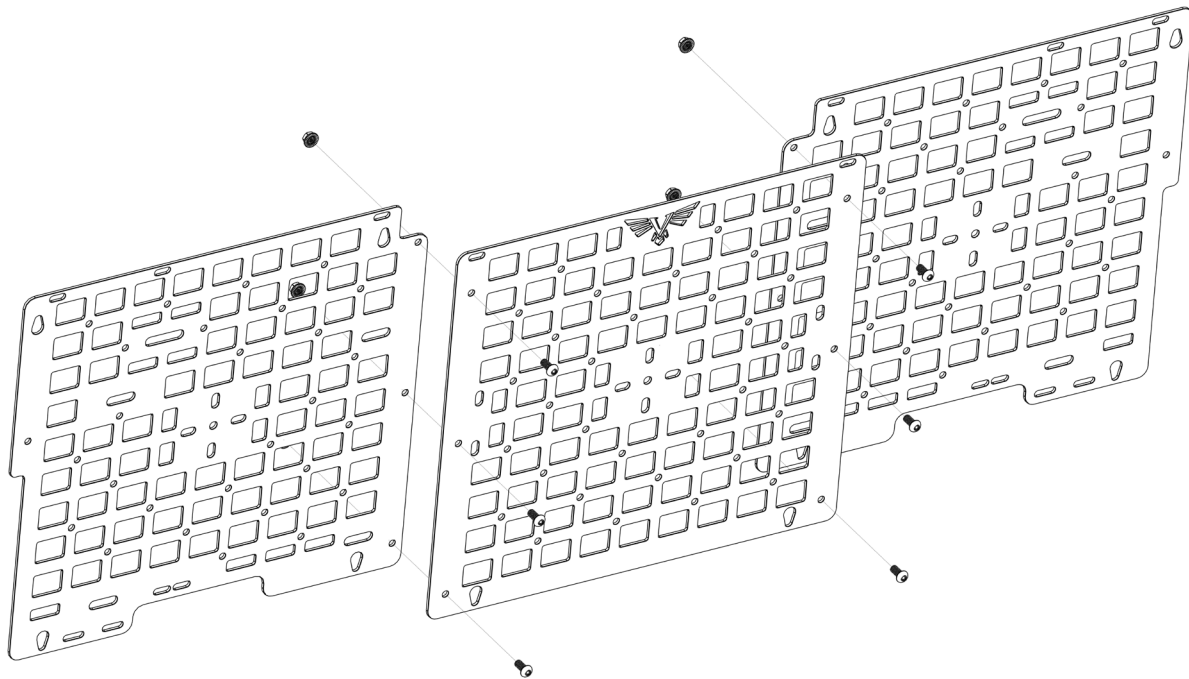
2x



07-21 Brackets

INSTALLATION

1. Start by connecting all three panels using the 5/16"-18 X 5/8" button head bolts and 5/16"-18 serr. flange nuts. The one with the Victory logo goes in the middle and the other panels can go on either side. Just make sure that the slots in the bottom corner are on the outside on both panels. You can decide whether you want the middle panel to go under or over the other two. Now is the time to attach any mounts that you want to use on the panels because it is difficult once the panels are mounted.



2. Next, loosen the two large bolts in the bed of the truck right next to the cab using a T-55 torx, just enough to be able to slip the mounts under them. Make sure the mounts go under the washers as well. Be sure to check the included parts list above for which lower brackets to use for your year Tundra. Then tighten them partially back up but make sure the mounts are still able to move. Push the mounts against the front of the bed for now to get them out of the way.

INSTALLATION

3. Using a T-30 torx, remove the bolts along the top of the bed. If you have a model older than 2022, you may have to remove the rail and use a hammer to remove the slide pin in the middle (as shown below) that would prevent you from bolting it back down flush with the new brackets.

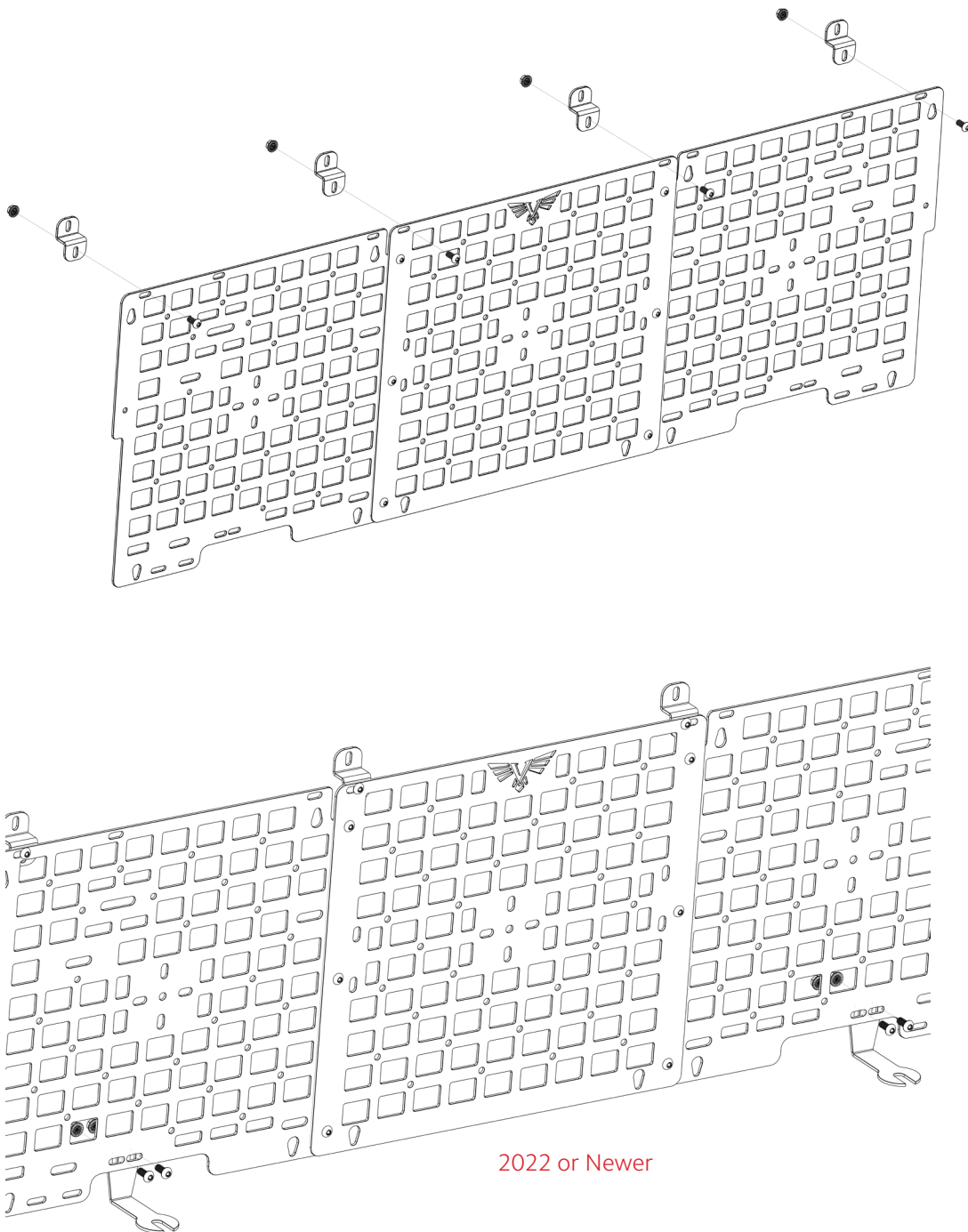


4. Now, using the 90 degree brackets we provide, reinstall the bolts back into the bed with the brackets. If you have a slide rail, place the brackets behind it and then re-install with the brackets. Be sure to hold the bracket straight while you tighten them.



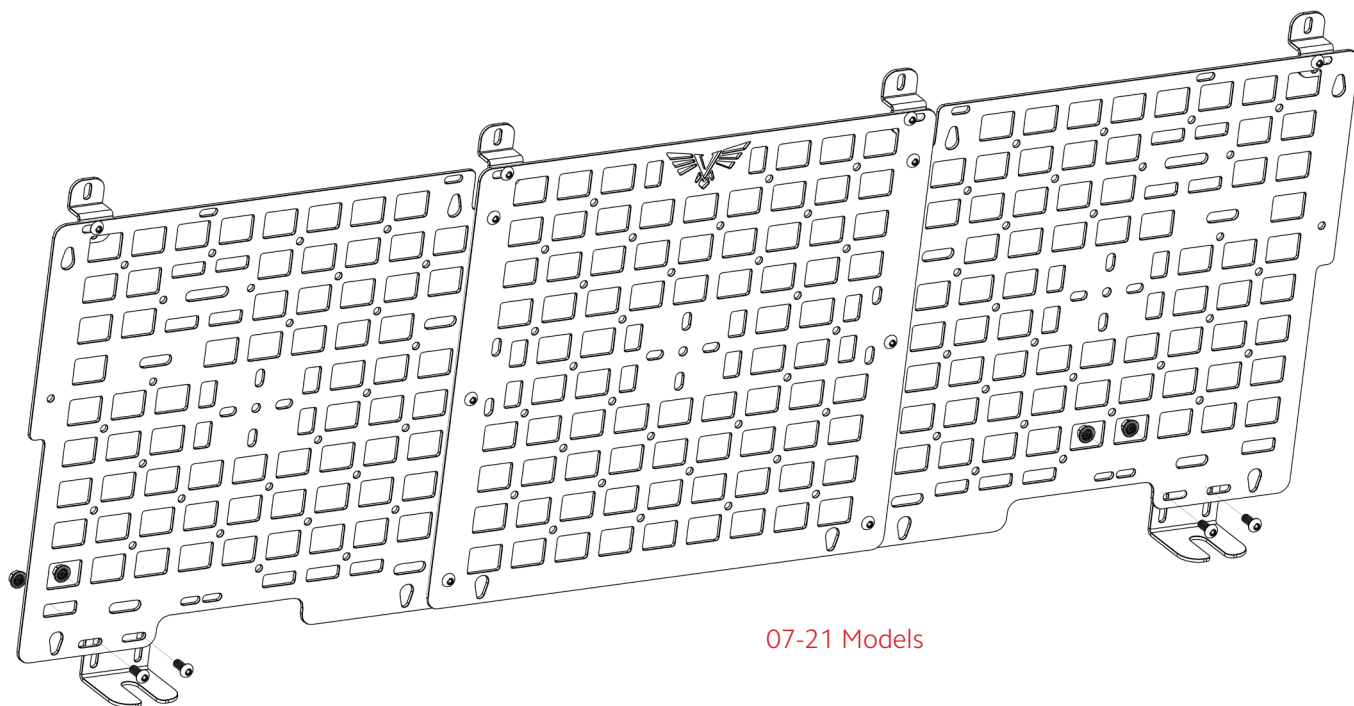
INSTALLATION

5. After your brackets are in place, secure the assembled panel to the brackets in the orientation shown below using the provided button heads and nuts. Once the panel is loosely secure to the brackets, secure the panel to the previously installed lower mounts. After everything has been assembled and loosely installed, go through and tighten everything down to finish the install.



2022 or Newer

INSTALLATION



07-21 Models