



VICTORY
4X4

TACOMA CAP RACK INSTALLATION INSTRUCTIONS

TOOLS NEEDED

- Phillips Screwdriver
- 3/8 End Wrench
- 5/32 T-Handle
- 9/16" wrench

HARDWARE

- 5/16 Narrow Tab Nut qty. 8
- 5/16-18 x 1/2" Button Head qty. 8
- 1/4-20 x 3/4" Stainless Button Head qty. 4
- 1/4" Stainless Washer qty. 4
- 1/4-20 x 3/4" Stainless Button Head qty. 42
- 1/4" Stainless Washer qty. 42
- 1/4-20 Flange Nut qty. 20
- M6 x 25mm Stainless Button Head qty. 10
- M8 Stainless Flat Washer qty. 10
- 8mm-1.25 Button Head qty. 8

Please read the instructions below carefully before attempting to install.

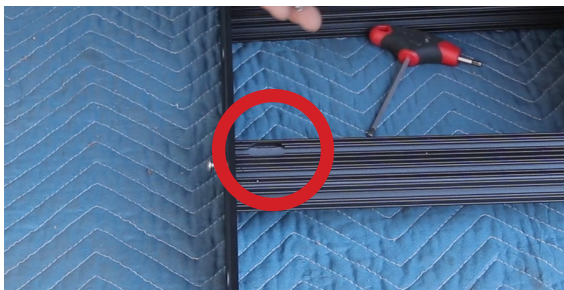
1. Before you start the install, verify your cap rack has rails that are $42.375" (+.25"/-.25")$ apart. Also verify the length of the rail is $36.75"$. Remove the end cap on both rails using a philips screwdriver on top and a $3/8"$ end wrench on the nut underneath. After you remove the end caps from the rails, slide 4 t-nuts into each rail.



2. Assemble the rack on the ground first. Install all of the bars with the $1/4"$ hardware (bolts and washers) that we provide except for the rear bar (the mounting location closest to the logo). This will allow you better access to the mounts when you bolt it on the roof.



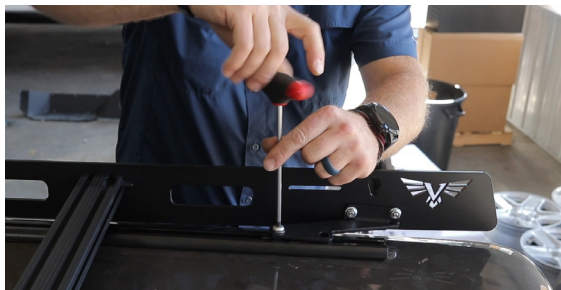
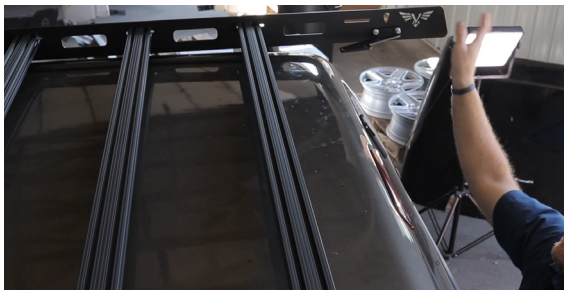
Make sure the t-slot openings are facing up. Center the bars in the slots for now, you will be able to adjust them later.



3. Install the mounts to the side rails. Make sure the offset is pointed to the center of the rack as shown in the first picture below. Loosely install the mounts so there is room for adjustment when you mount the rack.



4. Mount the rack and center it on the cab. Install the 5/16" button head bolts and a washer to the t-nuts that we installed earlier. Once the rack is mounted you can install the rear crossbar.



5. Go back and tighten down all of the bolts, including the end mount bolts.
Reinstall the end caps and you're finished with the installation!

